

We promise, We deliver

NOBLELIFT INTELLIGENT EQUIPMENT CO.,LTD

Add:528 Changzhou Road,Taihu Sub-district,
Changxing, Zhejiang 313100 China
Tel:86-572-6210817 6210311
Fax:86-572-6210777 6128612
Email:info@nobelift.com
Http:www.nobelift.com www.nobelift.cn



Nobelift Intelligent Equipment Co.,Ltd. reserves the right to make any changes without notice concerning colors, equipment or specifications detailed in this brochure, or to discontinue individual models. The configuration of trucks, delivered may differ slightly from those in brochures.

NOBLELIFT
Material Handling

**ROUGH
TERRAIN
FORKLIFT**

2WD 2.0-5.0T
4WD 2.0-3.5T



www.nobelift.com

MAIN SPECIALIST

Compact Size Designed For European Standard

Suspension Frame and Brake Pedal

Cyclone type Pre-cleaner

High Ground Clearance

Hydraulic Transmission

Heavy Duty Truck Tyre

LED Working Lights

Powerful Engines

Wide View Mast

VIROUS APPLICATIONS SOLUTION

Agriculture Planting

Construction Site

Timber Forestry

Landscaping

Mining



Superior Performance in Extreme Conditions

4WD



Capacity 2.0-3.5 Ton

Small Turning Radius 3120mm

Wheel Hub Reduction

High Grade-ability 45-50%

Yanmar engines

2WD / 4WD Convertor Switch

2WD

Strong Flexibility in Rough Terrain

Capacity 2.0-5.0 Ton

Small Turning Radius 2800mm(3.5ton)

Yanmar/Mitsubishi/Perkins engines

100% Differential Lock

Low Height Profile 1990mm
(Optional)



NOBLELIFT

Material Handling



Right Positioned Lever
Provide the operator with the best comfort of operation position and also increase the better visibility.



Full floating safeguard
Greatly improve the frame vibration. High strength roof enhances the forklift reliability and safety.



Easy Maintenance
Designed larger space and compact wire distribution, it's convenient to have big checking and maintenance.



High Ground Clearance
Offer greater maneuverability and keep the machine moving in the roughest of applications.



Wide-view Mast
Provides excellent through the mast visibility and allow safe operation.



Heavy Duty Truck Tyre
Industrial tyres with a wide footprint giving it greater stability and lift capacity in rough work environments.



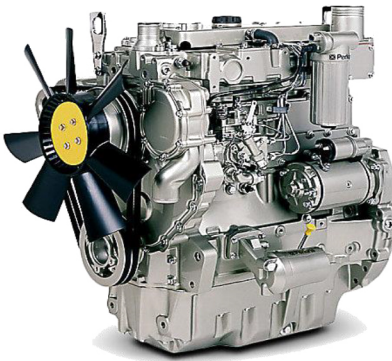
Suspension pedals
Provide extra foot space helps significantly deduct vibration from transmission.



Small Turning Radius
The bigger rear wheel steering angle makes the smaller turning radius.



LED Working Light
Offer a better lighting for operations and it's effective in energy conservation.



MITSUBISHI S4S (EU111A)
2WD 2-3.5Ton

YANMAR 4TNU94L (EU111A)
2WD/4WD 2-3.5Ton

YANMAR 4TNE98 (EU111A)
2WD/4WD 2-3.5Ton

PERKINS 1104C-44TA (EU111A)
2WD 4.0-5.0Ton

Rated output 35.3kw/2250rpm
Rated Torque 182N.m/1800rpm

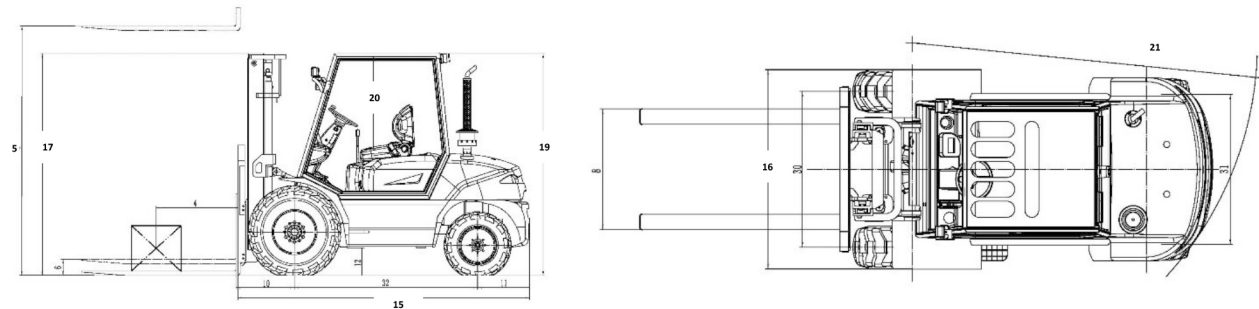
Rated output 35.5kw/2400rpm
Rated Torque 191N.m/1200rpm

Rated output 42.1kw/2300rpm
Rated Torque 196N.m/1700rpm

Rated output 74.5kw/2300rpm
Rated Torque 415N.m/1350rpm

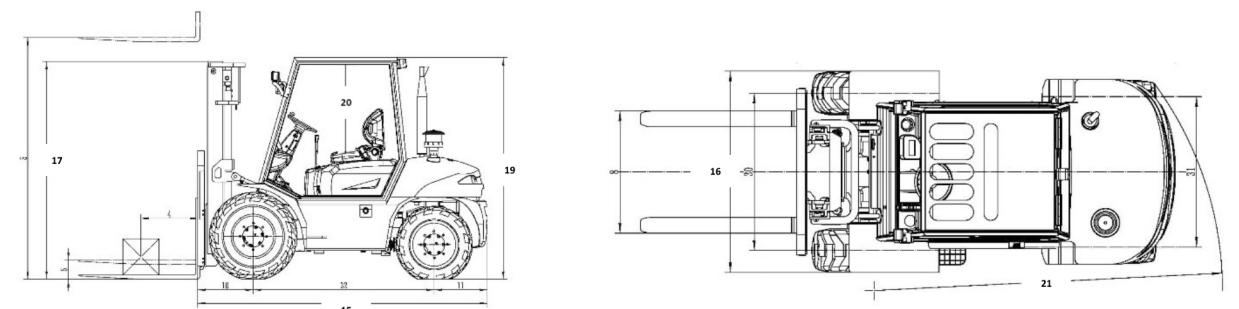
2WD Specification 2-3.5T

2WD 2.0/2.5/3.0/3.5/Low Height 2.5T										
General	1	Model		NT25LP	NT20	NT25	NT30	NT35		
	2	Power type		Diesel						
	3	Rated capacity		Kg	2500	2000	2500	3000	3500	
	4	Load centre		mm	500					
Characteristic&Dimension	5	Lifting height		mm	2700	3000				
	6	Free lift		mm	120	140	140	150	150	
	7	Fork size	LxWxT	mm	1220x125x40	1220x125x40	1220x125x40	1220x125x50	1220x125x50	
	8	Fork regulating range	Min./Max.	mm	16/1580	16/1580	16/1580	16/1580	16/1580	
	9	Mast tilt angle	F/R	Deg	10°/12°					
	10	Front overhang		mm	586	586	586	606	606	
	11	Rear overhang		mm	540	540	540	540	540	
	12	Min.ground clearance(drive steering axle)		mm	180	217	217	217	217	
	13	Min.ground clearance(chassis)		mm	190	285	285	285	285	
	14	Min.ground clearance(mast)		mm	190	270	270	270	270	
	15	Overall dimensions	Length to face of fork(without fork)	mm	3001	3001	3001	3001	3001	
	16		Overall width	mm	1600					
	17		Mast lowered height	mm	1900	2220	2220	2270	2270	
	18		Mast extended height(with backrest)	mm	3750	4280	4280	4330	4330	
	19		Overhead guard height	mm	1990	2275	2275	2275	2275	
	20		Height from seat surface to overhead guard inner side	mm	920	960	960	960	960	
	21	Turning radius		mm	2785	2785	2785	2785	2785	
	22	Min. right angle stacking aisle width		mm	4810	4810	4810	4810	4810	
Performance	23	Speed	Travel(Laden/Unladen)	Km/h	18/20	18/20	18/20	22/22	22/22	
	24		Lifting	mm	570	570	570	450	450	
	25		Lowering	mm	445	445	445	500	500	
	26	Max. Drawbar pull		KN	17	17	17	17	17	
	27	Max. Gradeability		%	16	16	16	16	16	
Tyre	28	Tyre	Front	14-17.5-14PR						
	29		Rear	27x10-12-12PR						
	30	Tread	Front	mm	1250.5	1250.5	1250.5	1250.5	1250.5	
	31		Rear	mm	1205	1205	1205	1205	1205	
32	Wheelbase		mm	1880						
Weight	33	Self weight		kg	5100	5050	5100	5200	5200	
	34	Weight distribution	Laden	Front axle	kg	5990	/	5990	/	7630
	35			Rear axle	kg	975	/	975	/	1050
	36		Unladen	Front axle	kg	1785	/	1785	/	2070
	37			Rear axle	kg	2680	/	2680	/	3110
Transmission	38		Battery	Voltage/Capacity		V/Ah	12V/90Ah			
	39	Fuel tank capacity		L	58	58	58	58	58	
	40	Transmission	Type		Hydraulic					
	41		Stage	F/R	1/1	1/1	1/1	1/1	1/1	
42	Operating pressure		Mpa	17.5						



4WD Specification 2-3.5T

4WD 2.0/2.5/3.0/3.5T									
General	1	Model		NT20-4	NT25-4	NT30-4	NT35-4		
	2	Power type		Diesel					
	3	Rated capacity		Kg	2000	2500	3000	3500	
	4	Load centre		mm	500				
Characteristic&Dimension	5	Lifting height		mm	3000				
	6	Free lift		mm	140	140	150	150	
	7	Fork size	LxWxT	mm	1220x125x40	1220x125x40	1220x125x50	1220x125x50	
	8	Fork regulating range	Min./Max.	mm	16/1580	16/1580	16/1580	16/1580	
	9	Mast tilt angle	F/R	Deg	10°/12°				
	10	Front overhang		mm	586	586	606	606	
	11	Rear overhang		mm	540	540	540	540	
	12	Min.ground clearance(drive steering axle)		mm	225	225	225	225	
	13	Min.ground clearance(chassis)		mm	255	255	255	255	
	14	Min.ground clearance(mast)		mm	270	270	270	270	
	15	Overall dimensions	Length to face of fork(without fork)	mm	3010	3010	3010	3010	
	16		Overall width	mm	1600				
	17		Mast lowered height	mm	2225	2225	2275	2275	
	18		Mast extended height(with backrest)	mm	4285	4285	4335	4335	
	19		Overhead guard height	mm	2280	2280	2280	2280	
	20		Height from seat surface to overhead guard inner side	mm	960				
	21	Turning radius		mm	3020				
	22	Min. right angle stacking aisle width		mm	4810	4810	4810	4810	
Performance	23	Speed	Travel(Laden/Unladen)	Km/h	22/22	22/22	20/20	20/20	
	24		Lifting	mm	570	570	450	450	
	25		Lowering	mm	445	445	500	500	
	26	Max. Drawbar pull		KN	17	17	17	17	
	27	Max. Gradeability		%	45	45	45	45	
Tyre	28	Tyre	Front	14-17.5-14PR					
	29		Rear	10.0-75-15.3					
	30	Tread	Front	mm	1250	1250	1250	1250	
	31		Rear	mm	1190	1190	1190	1190	
32	Wheelbase		mm	1880					
Weight	33	Self weight		kg	5200	5250	5400	5450	
	34	Weight distribution	Laden	Front axle	kg	/	/	/	/
	35			Rear axle	kg	/	/	/	/
	36		Unladen	Front axle	kg	/	/	/	/
	37			Rear axle	kg	/	/	/	/
Transmission	38		Battery	Voltage/Capacity		V/Ah	12V/90Ah		
	39	Fuel tank capacity		L	62				
	40	Transmission	Type		Hydraulic				
	41		Stage	F/R	2/1				
42	Operating pressure		Mpa	17.5					

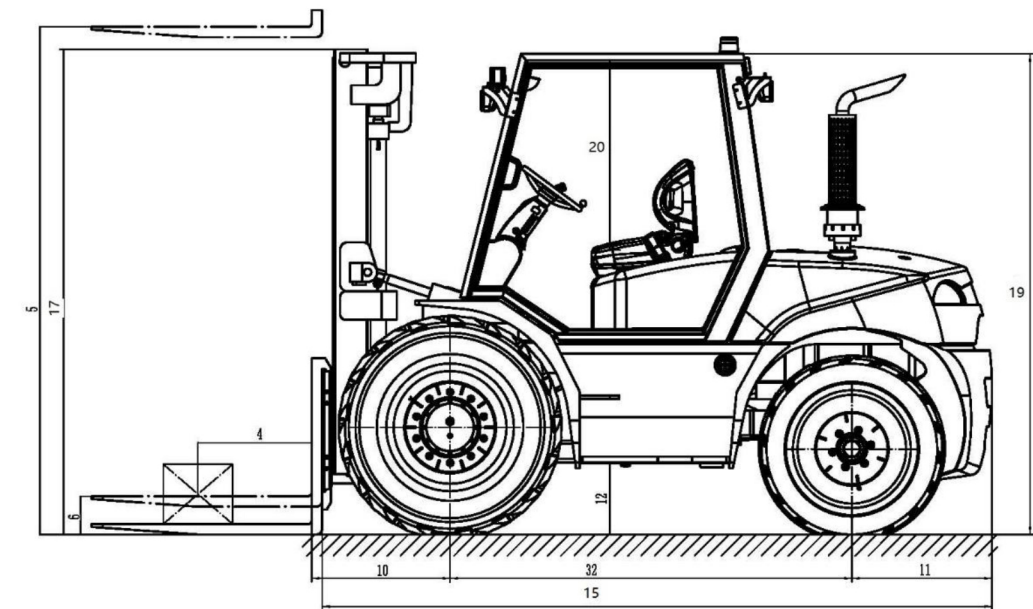
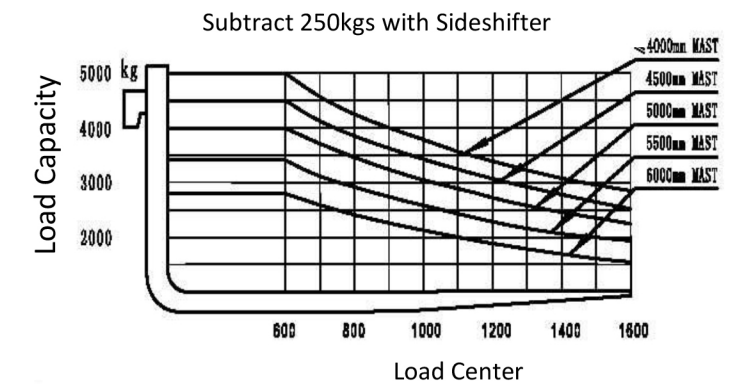
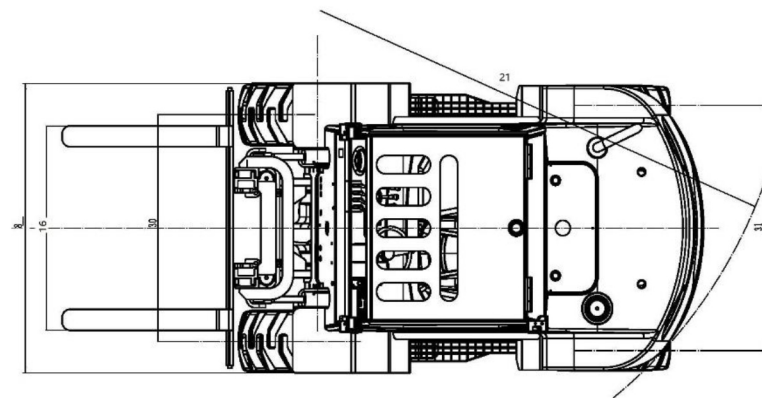


2WD Specification 4-5T

2WD 4.0/5.0T								
General	1	Model		NT40	NT50			
	2	Power type		Diesel				
	3	Rated capacity		Kg	4000	5000		
	4	Load centre		mm	600	600		
Characteristic&Dimension	5	Lifting height		mm	3000			
	6	Free lift		mm	/	/		
	7	Fork size	LxWxT	mm	1220x150x55	1220x150x55		
	8	Fork regulating range	Min./Max.	mm	16/2000	16/2000		
	9	Mast tilt angle	F/R	Deg	15°/15°			
	10	Front overhang		mm	732	732		
	11	Rear overhang		mm	740	740		
	12	Min.ground clearance(drive steering axle)		mm	324	324		
	13	Min.ground clearance(chassis)		mm	376	376		
	14	Min.ground clearance(mast)		mm	320	320		
	15	Overall dimensions	Length to face of fork(without fork)		mm	3541	3541	
	16		Overall width		mm	2076	2076	
	17		Mast lowered height		mm	2565	2565	
	18		Mast extended height(with backrest)		mm	/	/	
	19		Overhead guard height		mm	2541	2541	
	20	Height from seat surface to overhead guard inner side		mm	1003	1003		
	21	Turning radius		mm	3516	3516		
	22	Min. right angle stacking aisle width		mm	4810	4810		
	Performance	23	Speed	Travel(Laden/Unladen)		Km/h	20/22	20/22
		24		Lifting		mm	450	450
25		Lowering		mm	500	500		
26		Max. Drawbar pull		KN	50	50		
27		Max. Gradeability		%	30	30		
Tyre	28	Tyre	Front	445-65-22.5PR				
	29		Rear	12.5/80-18				
	30	Tread	Front	mm	1620	1620		
	31		Rear	mm	1720	1720		
32	Wheelbase		mm	2125	2125			
Weight	33	Self weight		kg	9073	9073		
	34	Weight distribution	Laden	Front axle	kg	/	/	
	35			Rear axle	kg	/	/	
	36		Unladen	Front axle	kg	/	/	
	37			Rear axle	kg	/	/	
Transmission	38	Battery	Voltage/Capacity		V/Ah	24V/90Ah		
	39	Fuel tank capacity		L	95	95		
	40	Transmission	Type		Hydraulic			
	41		Stage	F/R		2/1	2/1	
	42		Operating pressure		Mpa	19.5	19.5	

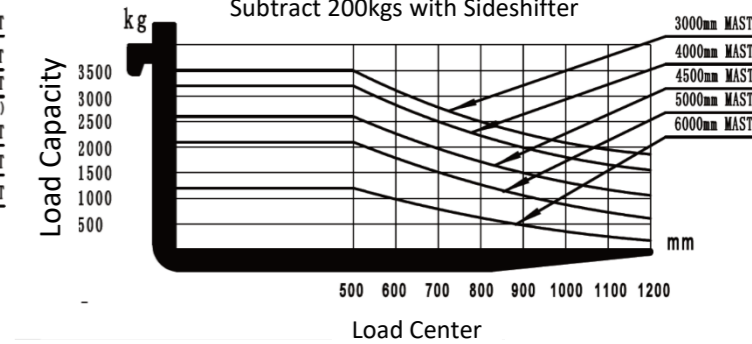
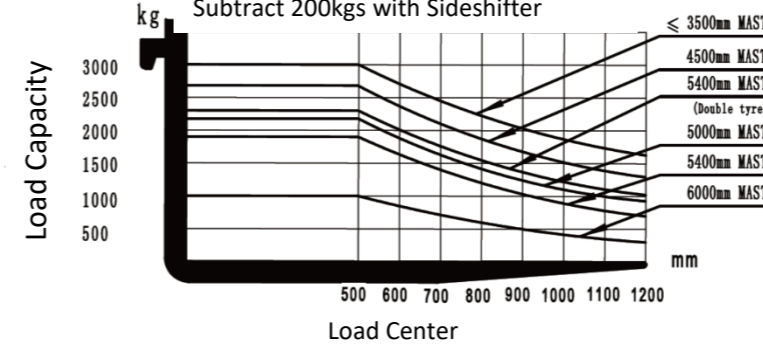
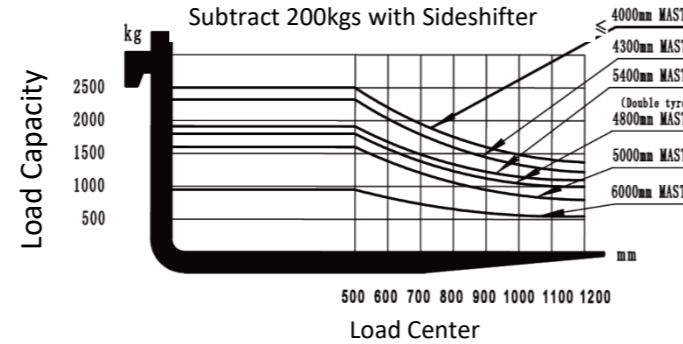
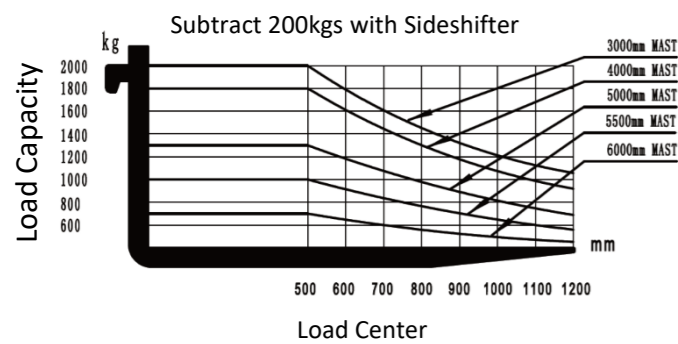
Mast Information - 2WD 5T

MAST	MAST LOWERED HEIGHT (mm)	FREE LIFT ON FORKS (mm)		FRONT OVERHANG	MAST TILTING ANGLE FRONT/REAR	CAPACITY AT MAX.HEIGHT		
		WITH BACKREST	WITH BACKREST			LOAD CENTER 600mm	WITHOUT SIDE SHIFT CARRIAGE	WITH SIDE SHIFT CARRIAGE
Type	Lift Height			5T				
TOTAL VISIBILITY DUPLEX	3000mm	2565	/	/	732	15/15	5000	4750
	3300mm	2715	/	/	732	15/15	5000	4750
	3500mm	2815	/	/	732	15/15	5000	4750
	3700mm	2915	/	/	732	15/15	5000	4750
	4000mm	3115	/	/	732	15/15	5000	4750
	4500mm	3365	/	/	732	15/15	4500	4250
	5000mm	3615	/	/	732	6/6	4000	3750
	5500mm	3865	/	/	732	6/6	3500	3250
FREE LIFTING TRIPLEX	4300mm	2515	1445	1495	732	15/15	4650	4400
	4500mm	2565	1495	1545	732	15/15	4500	4250
	4700mm	2630	1560	1610	732	15/15	4350	4100
	5000mm	2730	1660	1710	732	6/6	4000	3750
	6000mm	3165	1995	2045	732	6/6	3000	2750



Mast Information - Standard 2WD/4WD 2-3.5T

MAST		MAST LOWERED HEIGHT (mm)				FREE LIFT ON FORKS (mm)								FRONT OVERHANG				MAST TILTING ANGLE FRONT/REAR				CAPACITY AT MAX.HEIGHT (Kg)								
						WITH BACKREST				WITNOUT BACKREST												LOAD CENTER 500mm								
		Type	Lift Height	2.0T	2.5T	3.0T	3.5T	2.0T	2.5T	3.0T	3.5T	2.0T	2.5T	3.0T	3.5T	2.0T	2.5T	3.0T	3.5T	2.0T	2.5T	3.0T	3.5T	2.0T	2.5T	3.0T	3.5T	2.0T	2.5T	3.0T
TOTAL VISIBILITY DUPLEX	3000mm	2275				140	140	140	150	140	140	140	150	586	586	606	606	10/12				2000	2500	3000	3500	2000	2500	2800	3300	
	3300mm	2425				140	140	140	150	140	140	140	150	586	586	606	606	10/12				2000	2500	2800	3300	2000	2500	2800	3300	
	3500mm	2525				140	140	140	150	140	140	140	150	586	586	606	606	10/12				2000	2500	3000	3500	2000	2500	2800	3300	
	3700mm	2625				140	140	140	150	140	140	140	150	586	586	606	606	10/12				2000	2500	3000	3500	2000	2500	2800	3300	
	4000mm	2825				140	140	140	150	140	140	140	150	586	586	606	606	10/12				2000	2500	2800	3300	2000	2500	2600	3100	
	4500mm	3075				140	140	140	150	140	140	140	150	586	586	606	606	10/12				1700	2200	2400	2900	1700	2200	2400	2700	
	5000mm	/				140	140	140	150	140	140	140	150	586	586	606	606	6/6				/	/	/	/	/	/	/	/	/
	5500mm	/				140	140	140	150	140	140	140	150	586	586	606	606	6/6				/	/	/	/	/	/	/	/	/
	6000mm	/				140	140	140	150	140	140	140	150	586	586	606	606	6/6				/	/	/	/	/	/	/	/	/
FREE LIFTING TRIPLEX	4300mm	2225				737				1200				568	568	606	606	10/12				1900	2400	2700	3000	1700	2200	2500	2800	
	4500mm	2275				887				1350				568	568	606	606	10/12				2000	2200	2500	2900	2000	2200	2300	2700	
	4700mm	2325				1037				1550				568	568	606	606	10/12				1600	2100	2400	2800	1400	1900	2200	2600	
	5000mm	2480				1265				1710				568	568	606	606	6/6				1400	1800	2100	2500	1200	1600	1900	2300	
	5500mm	2655				1430				1875				568	568	606	606	6/6				1000	1400	1700	2100	800	1200	1450	1900	
	6000mm	2875				1615				2060				568	568	606	606	6/6				800	1000	1300	1700	600	800	1100	1500	



Mast Information – Low Height Profile 2WD 2-2.5T

MAST		MAST LOWERED HEIGHT (mm)				FREE LIFT ON FORKS (mm)								FRONT OVERHANG				MAST TILTING ANGLE FRONT/REAR				CAPACITY AT MAX.HEIGHT (Kg)							
						WITH BACKREST				WITNOUT BACKREST												LOAD CENTER 500mm				WITHOUT SIDE SHIFT CARRIAGE			
Type	Lift Height	2.0T	2.5T	3.0T	3.5T	2.0T	2.5T	3.0T	3.5T	2.0T	2.5T	3.0T	3.5T	2.0T	2.5T	3.0T	3.5T	2.0T	2.5T	3.0T	3.5T	2.0T	2.5T	3.0T	3.5T	2.0T	2.5T	3.0T	3.5T
TOTAL	2700mm	1900	/	/	/	140	140	/	/	140	140	/	/	586	586	/	/	10/12	10/12	/	/	2000	2500	/	/	2000	2500	/	/
VISIBILITY	3000mm	2050	/	/	/	140	140	/	/	140	140	/	/	586	586	/	/	10/12	10/12	/	/	2000	2500	/	/	2000	2500	/	/
DUPLEX	3300mm	2200	/	/	/	140	140	/	/	140	140	/	/	586	586	/	/	10/12	10/12	/	/	2000	2500	/	/	2000	2500	/	/
FREE LIFTING TRIPLEX	2700mm	1900				920				1140				568		606		10/12				2000		2500		/		/	

