



PSB12/15 PS16W

Comprehensive Design of Mast Versions and Lift Capacities for Different Demands

INTRODUCTION

The PSE/PSB Series and PS16W for medium stacking operations with capacities up to 1200kg/1500kg/1600kg.

The PS16W with wide mast for high residual lift capacities and perfect view through the mast.

The optional foldable platform with sideways protective arms or the maintenance free batteries for low duty applications makes this truck the ideal assistant.

The powerful AC-drive technology and the CAN BUS tiller reduces maintenance and increase the overall performance.

ADVANTAGES:

- Powerful high quality AC drive unit.
- Optional EPS- Electric power steering system.
- 3PzS battery cells or maintenance free semi-traction batteries.
- The 1500kg version comes with a higher battery capacity for longer autonomous operations.
- Different mast versions available.
- Robust and ergonomic design with various storage areas.
- Optional foldable platform with protective arms.



Powerful high quality AC drive unit ensures high performance with low maintenance cost.

Optional EPS- Electric power steering system.

Ergonomic CAN-BUS tiller, for both left-handed and right handed operators.



High performance 3PzS (4PzS) DIN-standard battery cells for long operations.



Optional foldable platform with protective arms. The cushioned platform ensures safety in all traveling conditions.



Key-switch, emergency switch and battery discharge Indicator.



Diverse storage areas for stretch foils, documents or clipboards, etc.



Foldable platform allows higher flexibility in narrow spaces.

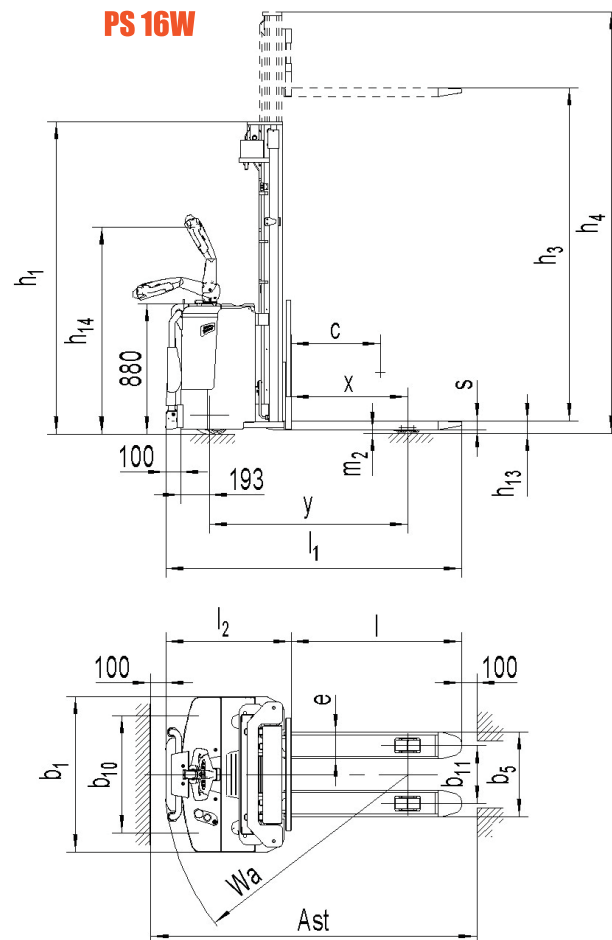
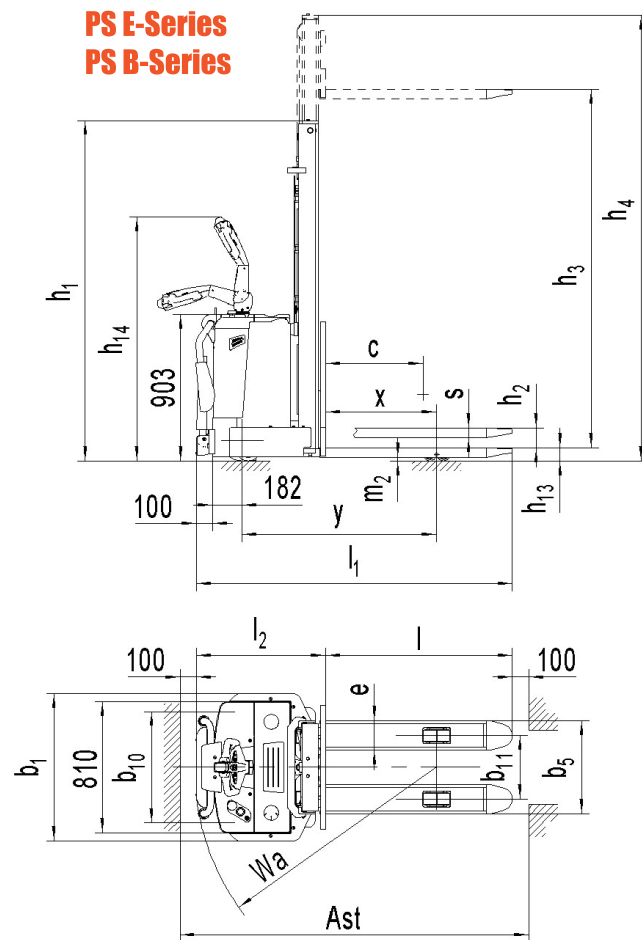
Several mast versions are available for ps B-Series with different lifting heights.



PSE-series PSB-series

Mast table PSB12/PSE12/PSB15

Designation	Lowered mast height h_1 (mm)	Free lift height h_2 (mm)	Lift height h_3 (mm)	Lift+fork height h_3+h_{13} (mm)	Extended mast height h_4 (mm)
PSB12					
Two-stage mast	1976	1519	1519	1600	1976
Two-stage mast	1796	120	2519	2600	2996
	1946	120	2819	2900	3296
	2096	120	3119	3200	3596
	2296	120	3519	3600	3996
Two-stage mast FFL (Full-Free-Lift)	1946	1484	2819	2900	3281
	2096	1634	3119	3200	3581
PSE12					
Two-stage mast	1976	1519	1519	1600	1976
Two-stage mast	1796	120	2519	2600	2996
	1946	120	2819	2900	3296
Two-stage mast FFL (Full-Free-Lift)	1946	1484	2819	2900	3281
PSB15					
Two-stage mast	1946	150	2819	2900	3281
Two-stage mast FFL (Full-Free-Lift)	1946	1484	2819	2900	3281
Three-stage mast	1726	—	3319	3400	3939
Three-stage mast FFL	1726	1120	3319	3400	3925
Three-stage mast	1796	—	3519	3600	4139
	1796	1260	3519	3600	4125



Type sheet for industrial truck acc. to VDI 2198 1KG=2.2LB 1INCH=25.4MM

Distinguishing mark	1.2	Manufacturer's type designation		PSE12 ¹⁾	PSB12	PSB15	PS16W
	1.3	Power (battery ,diesel, petrol, gas, manual)			Battery		Battery
	1.4	Operator type		Pedestrian	Pedestrian(stand)	Pedestrian(stand)	
	1.5	Load Capacity / rated load	Q (t)	1.2	1.5	1.6	
	1.6	Load centre distance	c (mm)		600		
Weight	1.8	Load distance ,centre of drive axle to fork	x (mm)		684		784
	1.9	Wheelbase	y (mm)	1196	1235	1336	
	2.1	Service weight	kg	765	960	1035	1450
	2.2	Axle loading, laden front/rear	kg	685/1280	830/1330	880/1655	1400/1650
Tires, chassis	2.3	Axle loading, unladen front/rear	kg	585/180	730/230	780/255	1130/320
	3.1	Tires		Polyurethane(PU)		Polyurethane(PU)	
	3.2	Tire size,front	Φxw (mm)		Φ252×88		Φ252×88
	3.3	Tire size,rear	Φxw (mm)		Φ80×70		Φ80×70
	3.4	Additional wheels(dimensions)	Φxw (mm)		Φ150×54		Φ150×54
	3.5	Wheels,number front/rear(x=driven wheels)			1x +2/4		1x +2/4
	3.6	Tread, front	b ₁₀ (mm)		686		790
3.7	Tread, rear	b ₁₁ (mm)		390/505		390/505	
Dimensions	4.2	Lowered mast height	h ₁ (mm)	1946	2096	1946	2102
	4.3	Free Lift height	h ₂ (mm)		120	150	—
	4.4	Lift height	h ₃ (mm)	2819 ²⁾	3119 ³⁾	2819 ⁴⁾	4515
	4.5	Extended maximal height	h ₄ (mm)	3296	3596	3281	5112
	4.9	Height of tiller in drive position min./ max.	h ₁₄ (mm)		985/1420		961/1396
	4.15	Height, lowered	h ₁₃ (mm)		81		85
	4.19	Overall length	l ₁ (mm)	1846	1846/1946	1883/1983	1895/1995
	4.20	Length to face of forks	l ₂ (mm)	695	695/795	733/833	746/846
	4.21	Overall width	b ₁ (mm)	810	910		1050
	4.22	Fork dimensions	s/e/l (mm)		60/180/1150		60/180/1150
	4.25	Distance between fork-arms	b ₅ (mm)		570/685		570/685
	4.32	Ground clearance, centre of wheelbase	m ₂ (mm)		26	21	25
	4.33	Aisle width for pallets 1000X1200 crossways	Ast (mm)	2320	2320/2420	2360/2460	2400/2500
	4.34	Aisle width for pallets 800X1200 lengthways	Ast (mm)	2215	2215/2315	2250/2350	2350/2450
	4.35	Turning radius	Wa (mm)	1400	1400/1500	1440/1540	1550/1650
Performance data	5.1	Travel speed, laden/ unladen	km/h		6.0/6.0		6.0/6.0
	5.2	Lift speed, laden/ unladen	m/s		0.105/0.15		0.10/0.16
	5.3	Lowering speed, laden/ unladen	m/s		0.13/0.11		0.095/0.12
	5.8	Max. gradeability, laden/ unladen	%		6/12		6/12
	5.10	Service brake			Electromagnetic		Electromagnetic
	Electric- engine	6.1	Drive motor rating S2 60min	kW		1.3	
6.2		Lift motor rating at S3 4.5%	kW		2.2	3.0	3.0
6.3		Battery acc. to DIN 43531/35/36 A, B, C, no		No,not DIN	No,cells 3PZS		No,cells 4PZS
6.4		Battery voltage, nominal capacity K5	V / Ah	2x12/90	24/210		24/280
6.5		Battery weight +/-5%	kg	65	200		250
6.6		Energy consumption acc: to VDI cycle	kWh/h	1.4	2.5		2.6
Additional data	8.1	Type of drive control			AC-Speed Control		
	8.4	Sound level at driver's ear acc. to EN 12053	dB(A)		<70		

1) No platform available, no EPS available

2)optional 1519mm,2519mm

3)optional 1519mm,2519mm,2819mm,3519mm 4)optional 2819mm,3319mm with full lift(FFL)